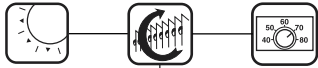
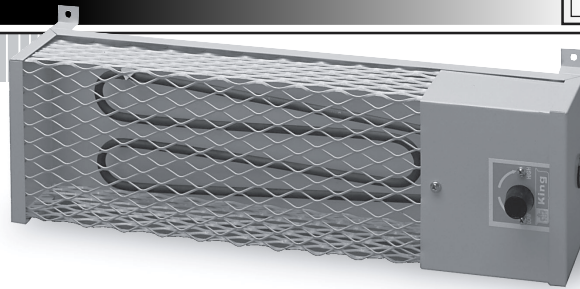


UTILITY HEATER



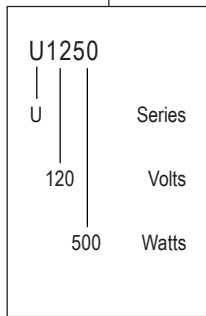
RADIANT/PUMP HOUSE HEATER
FREEZE PROTECTION



FEATURES:

- Radiant Heat
- Convection Heat
- Built-In Thermostat
- Steel Element
- Mounting Feet
- Steel Case with an Expanded Metal Element Shield
- Baked Enamel Protective Coating
- Available in Stainless Steel

MODEL CODE:



SELECTION:

WATTAGE	120V		240V		WEIGHT (lbs)
	MODEL	UPC #093319 PART NO.	MODEL	UPC #093319 PART NO.	
62	U1206	12601			5
125	U1212	12602			
187	U1218	12604			
250	U1225	12600	U2425	12612	
500	U1250	12605	U2450	12615	
750	U1275	12606	U2475	12618	
1000	U12100	12609	U24100	12621	

The U Series heater is designed to keep mechanical equipment from freezing such as pumps, valves, and farm machinery. The radiant heat is absorbed by the metal equipment thus making it more effective than convection heaters. This heater is simple and reliable with no moving parts to wear out or maintain. An inexpensive choice when freeze protection is required.

It has a built-in thermostat so it will turn off when the ambient temperature is safely above freezing. The guard keeps foreign objects away from the element.

ENGINEERING SPECIFICATIONS:

Contractor shall supply and install, U Pump House series radiant heaters, manufactured by King Electrical Mfg. Company. Heaters shall be of the wattage and voltage as indicated on the plans.

Element: 304 or 840 Stainless

Thermostat: Built-in snap action with a range of 40° to 90° F

Safety Limit: Capillary tube running the full length of the element provides over-temperature protection, automatically resets when temperature drops

Enclosure: Steel case with an expanded metal element shield

Finish: Baked enamel protective coating

DIMENSIONS

